

West of England Joint Transport Study

16 November 2015

Joint Transport Study

- Need to refresh our transport strategy in light of successful delivery of JLTP3, new challenges and the emerging Joint Spatial Plan
- Many JLTP3 schemes have been delivered, are under construction or are in development (£500m investment:25% of DfT funds)
 - MetroWest Phases 1&2
 - MetroBus
 - Bath Package of transport improvements
 - Cycle Ambition Fund and Local Sustainable Transport Fund
 - Great Western Mainline

WEST OF ENGLAND LOCAL ENTERPRISE PARTNERSHIP



- £200m MetroBus 50KM network, services start 2016
- £58m MetroWest Phase 1, includes Portishead line – construction starts 2017
- £43m MetroWest Phase 2, Henbury line – construction starts 2019

Rail Electrification



- Scheduled to reach Bristol Temple Meads and Bristol Parkway by the end of 2016. Some electric services from summer 2017 with full timetable from December 2018.
- New electric and bi-mode IEP Class 800/801 trains will have 600 seats compared to 472 on HSTs.
- Journey times from Bristol to London will fall from 96 minutes to 79 minutes.
- Network Rail is piloting battery powered trains that can run beyond the wires. Batteries are charged from regenerative braking and at terminal stations.

Transport Objectives

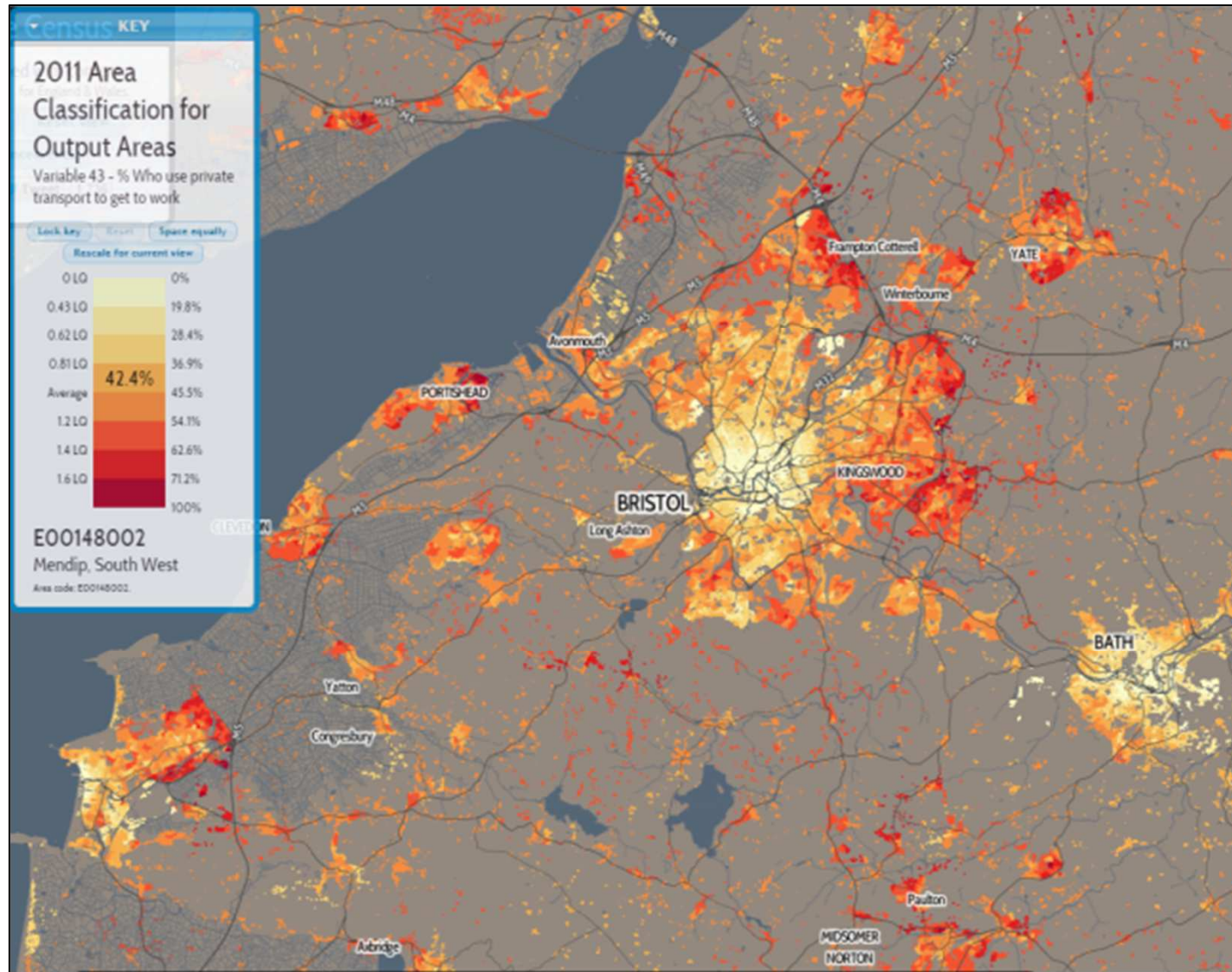
- Support economic growth
- Reduce carbon emissions
- Promote accessibility
- Contribute to better safety, health and security
- Improve quality of life and a healthy, natural environment

Key Challenges

- Direct transport challenges:
 - **Quality of travel choices:** variable quality of sustainable travel offer, multi-modal connectivity, high levels of car use in many areas
 - **Congestion and resilience:** network suitability for high levels of car use, impacts of incidents, ease of movement
- Wider implications:
 - **Environment:** carbon emissions, impacts of traffic on urban and rural areas, noise, air quality (incl health impacts)
 - **People:** communities with social challenges, road safety, health impacts
 - **Economy:** constraints on growth ambitions, housing delivery

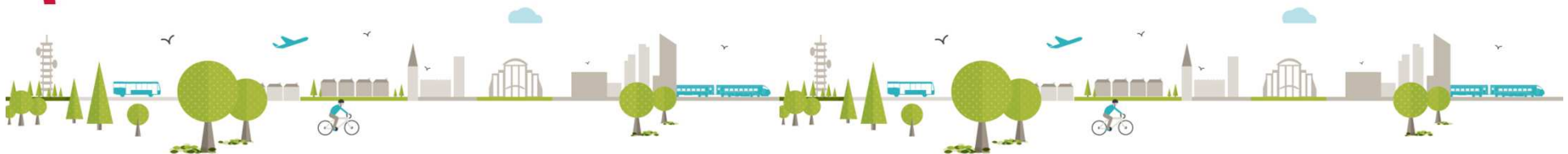


WEST OF ENGLAND LOCAL ENTERPRISE PARTNERSHIP



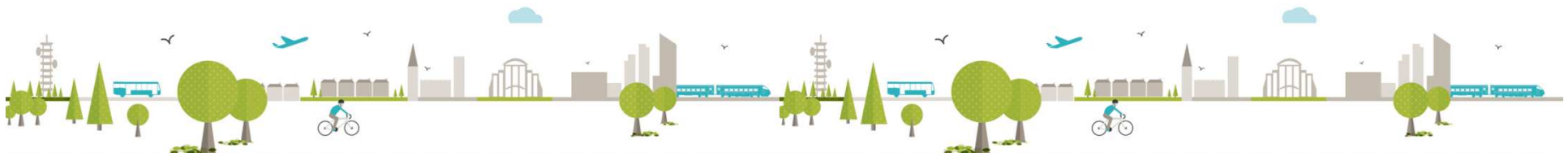
Joint Transport Study Future Transport Concepts

1. Strengthen enhanced PT corridors
2. Extended MetroBus network
3. Extended MetroWest network
4. Cycle Superhighways
5. Orbital Connectivity
6. Demand Management
7. Major Site Mitigation
8. Sub-regional Pinchpoints
9. Strategic Corridor Package
10. International Gateways
11. Behavioural change [e.g. LSTF]
12. Regional Connectivity



Joint Transport Study Future Transport Concepts

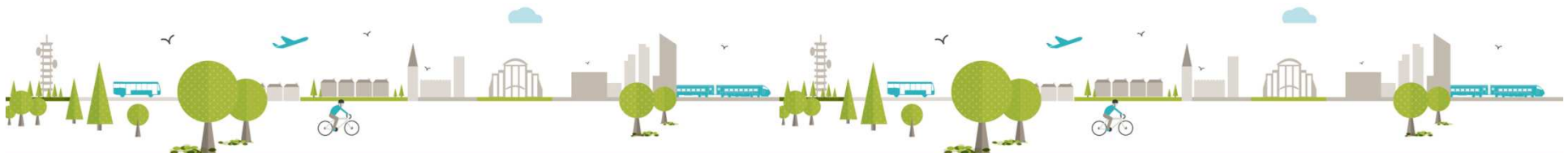
- Have we appropriately assessed current issues?
- Do we have the right objectives?
- What should we develop as possible transport solutions; are we on the right ‘Track’?



Joint Spatial Plan and Transport Study

- JSP and JTS being carried out alongside each other
- JTS to tackle existing problems and growth to 2036
- JTS builds upon successes e.g. major scheme programme
- Opportunity to engage from Nov 2015 beginning with Issues & Options :ends 29th January

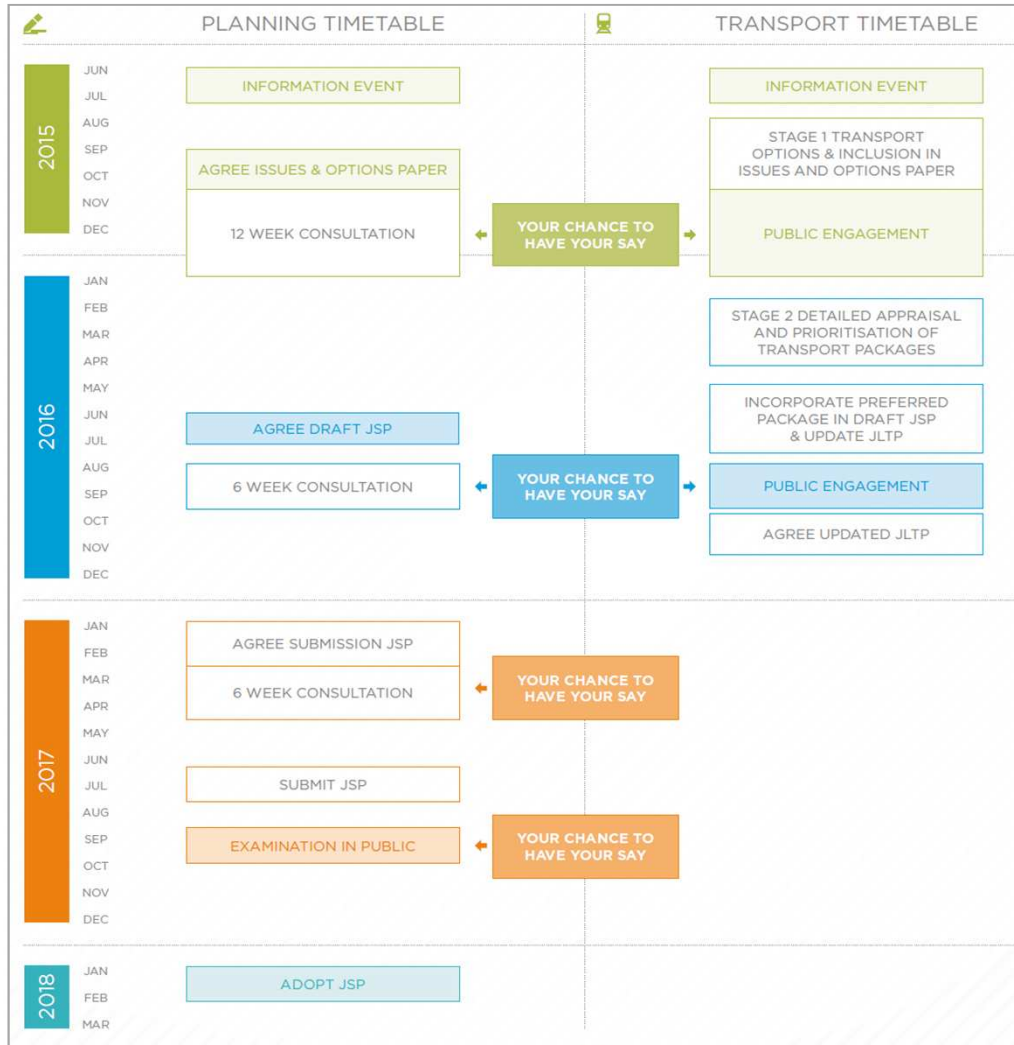
www.westofenglandlep.co.uk/jsp



Timetable



“A PROSPECTUS FOR SUSTAINABLE GROWTH”



WEST OF ENGLAND JOINT PLAN BUILDING YOUR FUTURE



THE WEST OF ENGLAND'S NEW FRAMEWORK FOR MEETING OUR HOUSING AND TRANSPORT NEEDS

WEST OF ENGLAND JOINT PLAN BUILDING YOUR FUTURE



WEST OF ENGLAND JOINT TRANSPORT STUDY

The west of England's new local authorities have launched a public consultation as part of the joint transport study, which will focus on high level strategy and the delivery area of transport services throughout the area with areas.

Wiltshire Council, East and North East Somerset Council, North Somerset Council and South Gloucestershire Council are preparing the study in parallel with the west of England Joint Spatial Plan, which is looking at how to meet the need for housing and employment, space up to

The consultation about the first stage in the transport study includes:

1. An assessment of current issues
2. Formulation of objectives
3. Developing possible transport solutions

It will run to 29 January 2016. Details about both the joint transport study and joint spatial plan can be found at: www.jointplanagrees.org.uk

